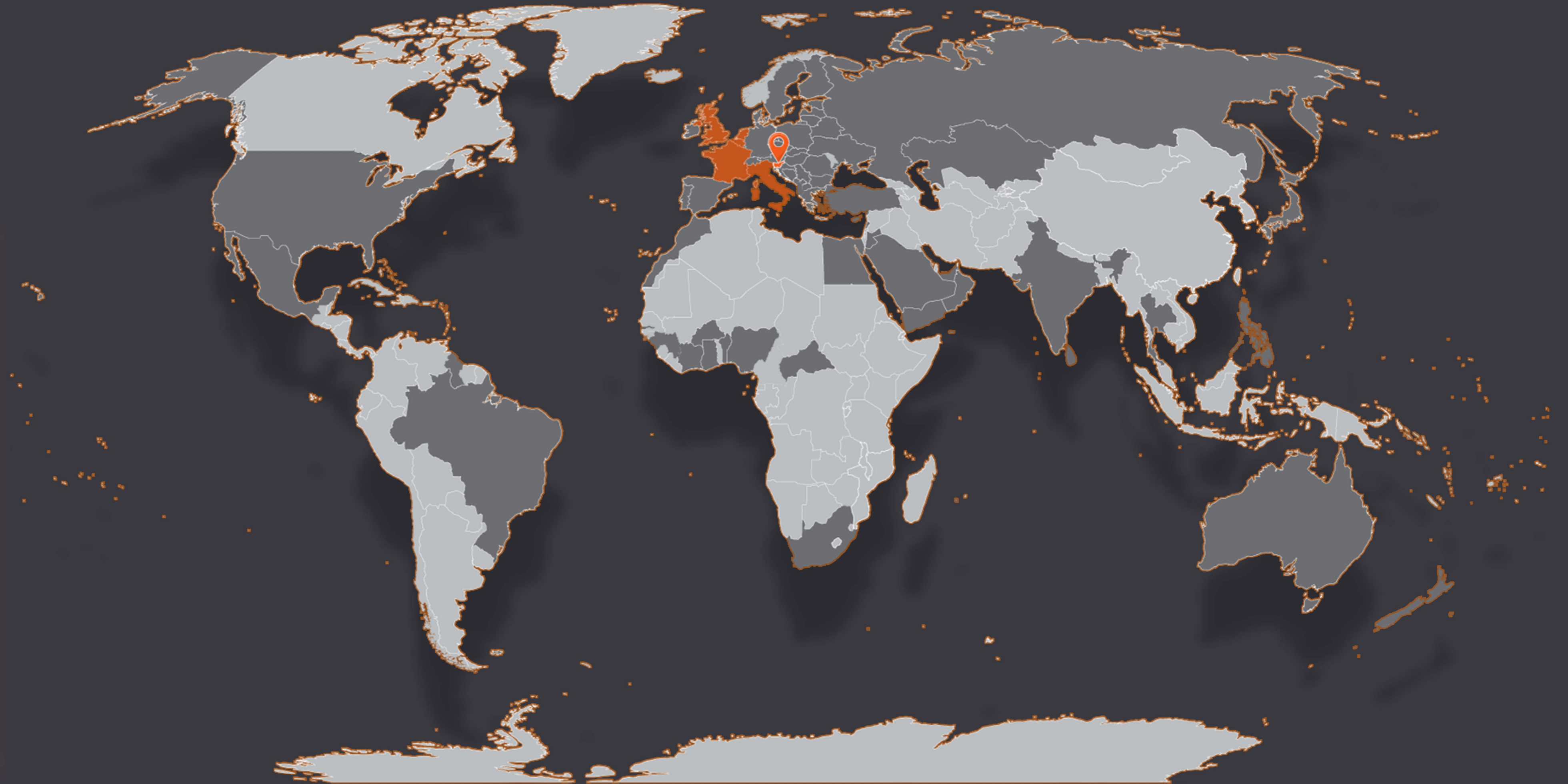
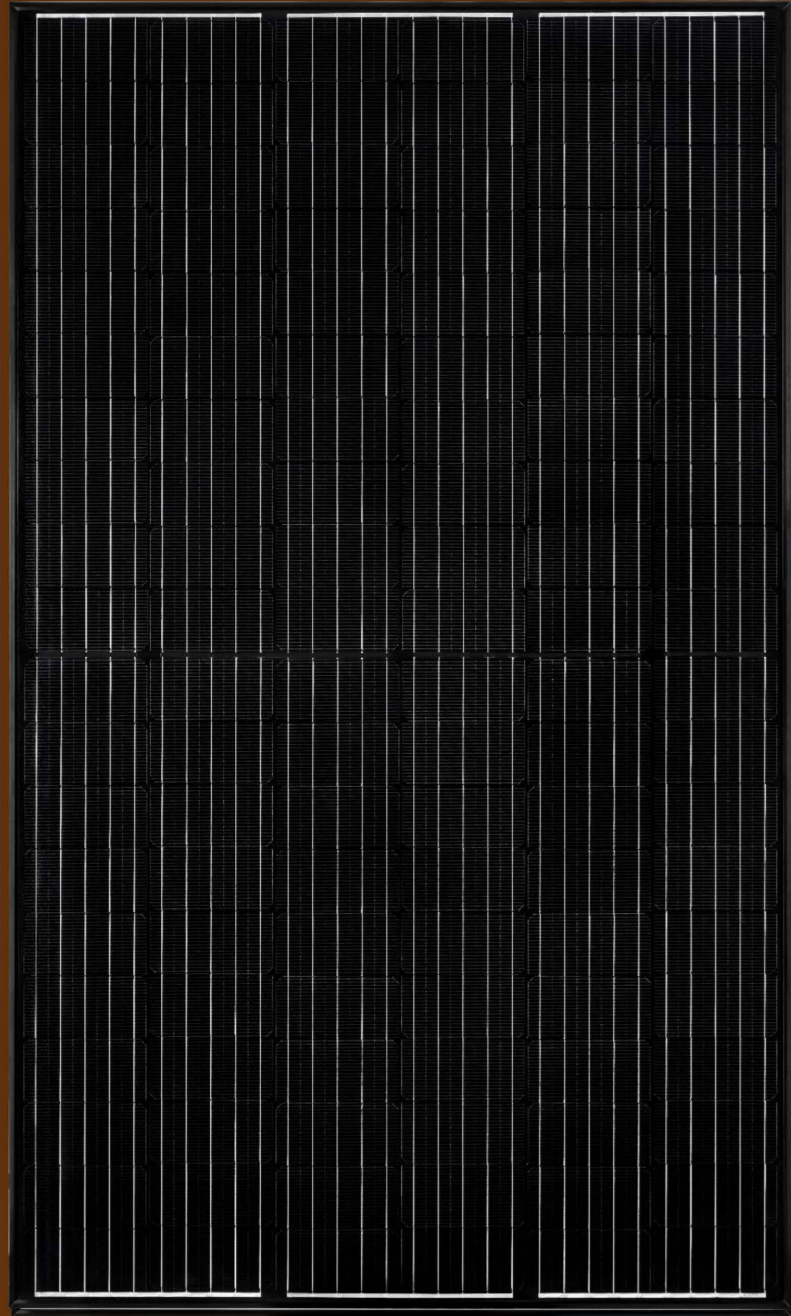










Solar company!



the **sunny** side of **life**

Why BISOL?

- ▶ VERY respectful history  since 2004
- ▶ Established and run by technical PhDs  **Product excellence at our core**
- ▶ Privately owned  **Long-term focus**
- ▶ Operating profitably, practically debt free  **Stable**
- ▶ Running production 24/7  **Cost optimised**
- ▶ Expanding capacity annually, 90+ markets worldwide  **Globally proven competitiveness**





REALLY European

No tricks:

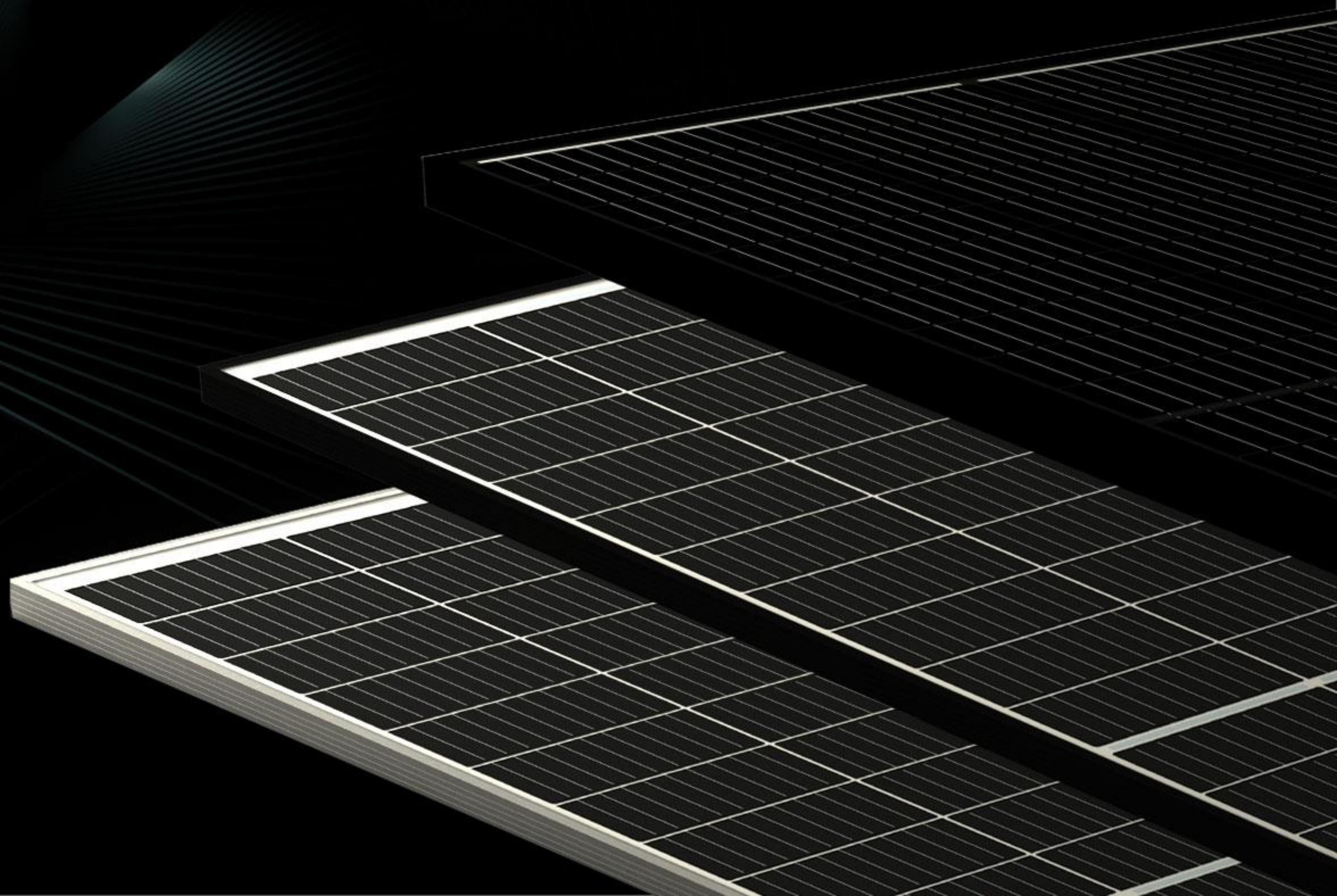
- ▶ designed
- ▶ manufactured
- ▶ handled
- ▶ certified
- ▶ supported

in the heart of Europe.



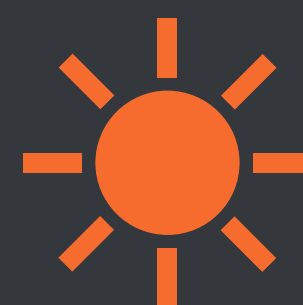
BISOL PV modules: The heart of PV power plant

- ▶ Proven European origin
- ▶ 15-year product guarantee
- ▶ 25-year linear guarantee
- ▶ **BISOL Supreme™:**
25-year product
guarantee & 100% output
power guarantee
- ▶ **Diversity**
- ▶ **Negligible degradation**
- ▶ **High energy yields**
- ▶ **Various applications**

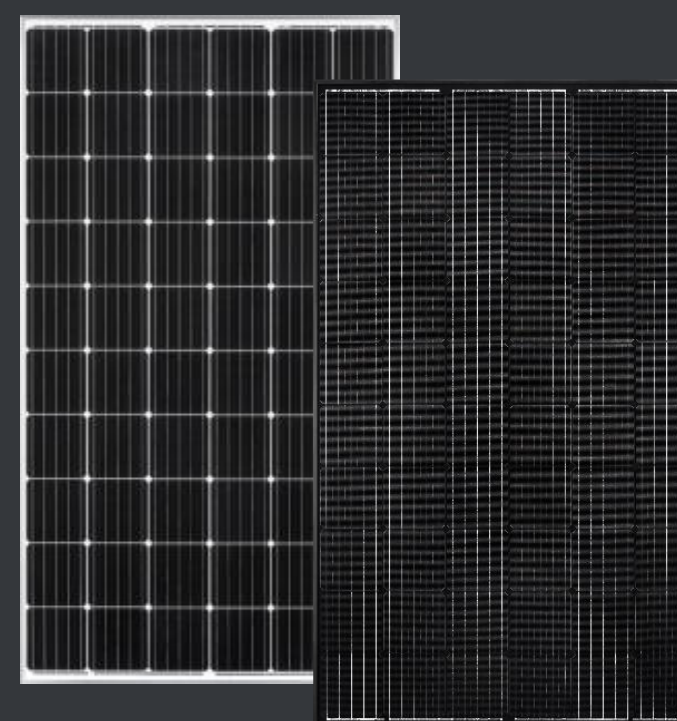




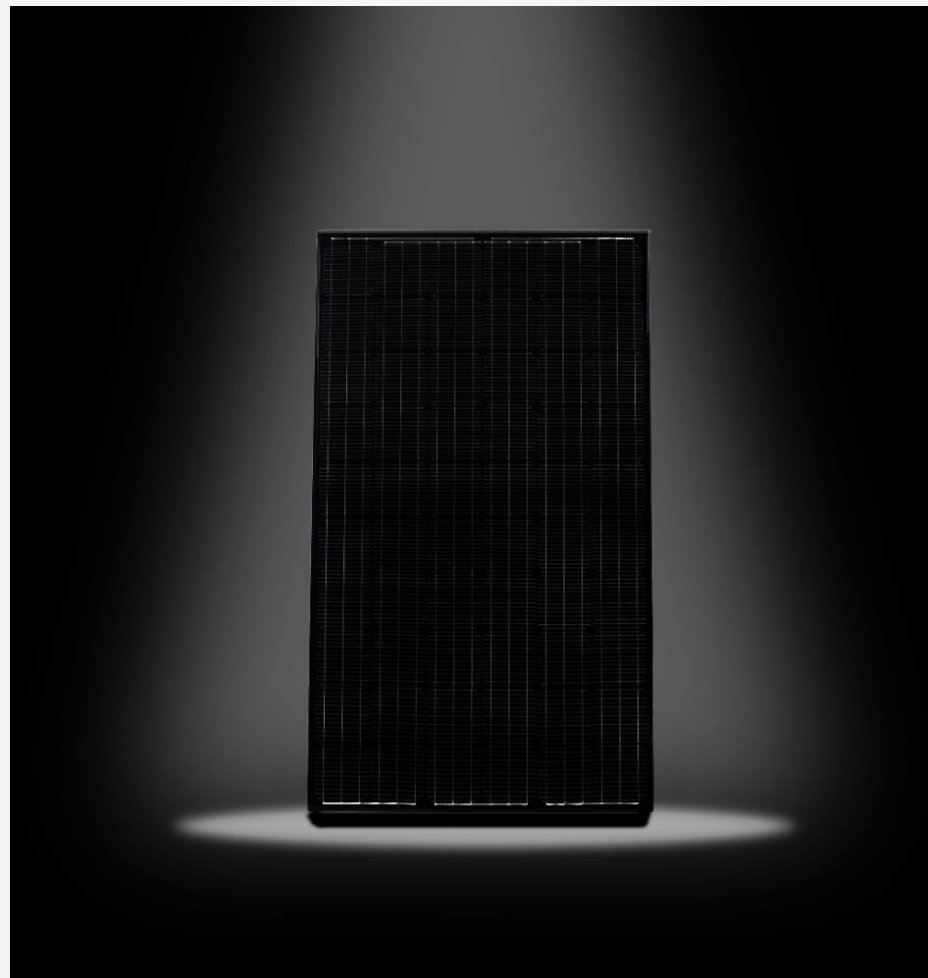
Satisfying all your electrical needs!



BISOL PV modules



MORE



BISOL Supreme

- Power classes: 315–320 Wp
- **100% output power guarantee**
- 0% effective degradation rate
 - + 11% more energy
- Specialized equipment, materials tested till destruction, unique processes
 - Individualised QR code
- Improved temperature coefficients
 - Lower NOTC
 - PID, LID and other ID free
- **25-year product guarantee**

MORE

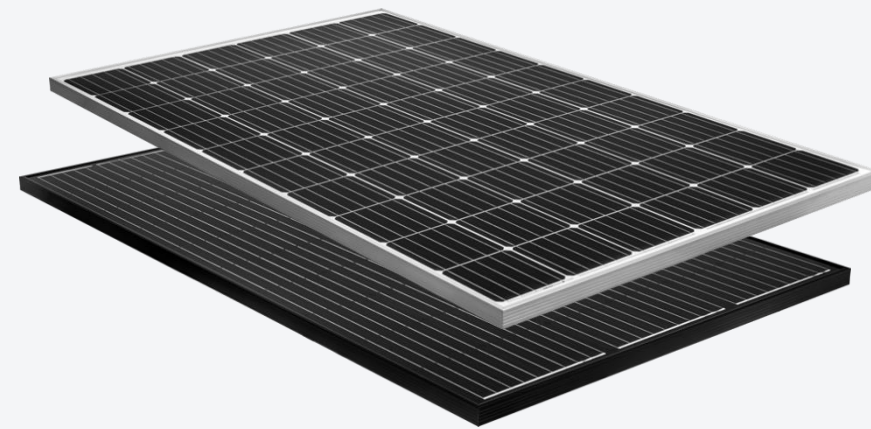


BISOL Duplex

- Power classes:
 - 360–380 Wp** (120 cells)
 - 435–455 Wp** (144 cells)
- M6 dimension half-cut cell
- Multi-busbar technology with advanced 9 busbars
 - Limited shading
- Excellent low light performance
 - Lower losses

120 CELLS

144 CELLS



BISOL Premium Series

- Power classes: 315–335 Wp
 - Monocrystalline
- Standard anodized 35 mm frame
 - 18.8 kg per piece
- High snow & wind load resistance
 - High impact resistance
 - Easy grip for installation manoeuvring
- Compatible with majority of mounting solutions

MORE



BISOL BIPV

- Power classes: 315–335 Wp
 - Monocrystalline
- Special BIPV frame (Solrif®)
- Replaces conventional roofing
- Alignment with roof surface
 - Water resistant

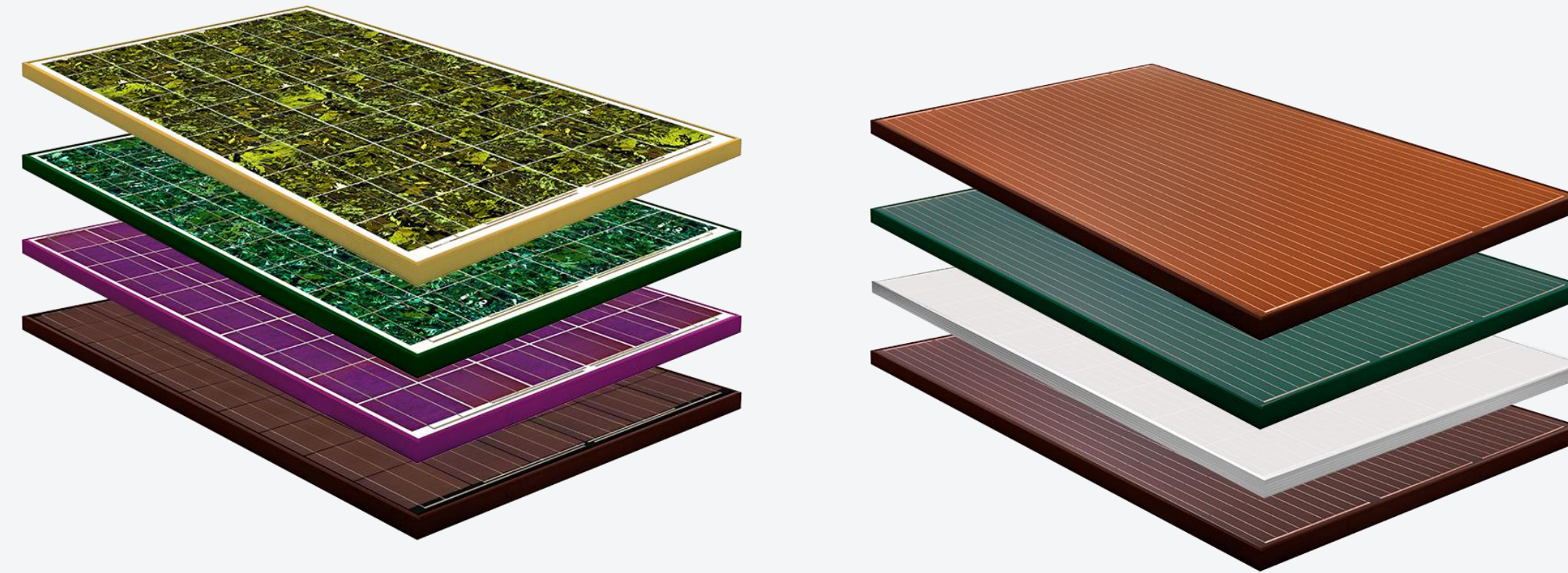
MORE



BISOL Laminate

- Power classes: 315–335 Wp
 - Monocrystalline
 - Without frame
- Ideal for integration
- Also available in colour (Spectrum)

MORE

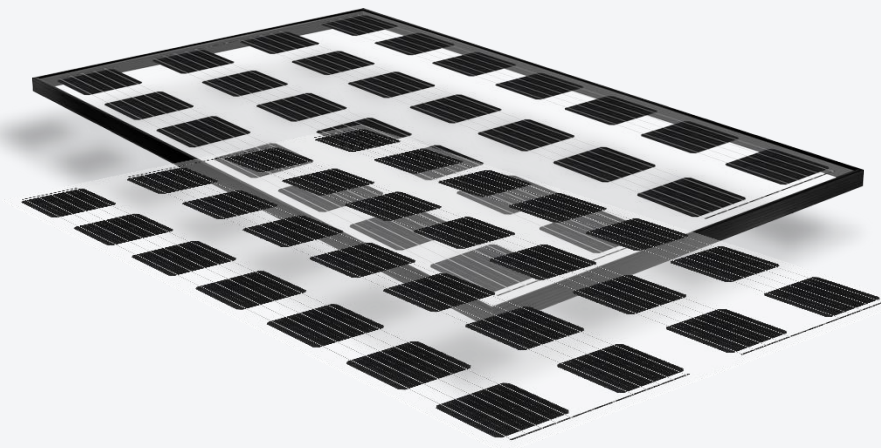


BISOL Spectrum

- Power classes:
Coloured solar cells: 255 Wp (all colours),
290 Wp (rustic red)
Coloured glass: 190 Wp (White), 200 Wp
(Orange), 280 Wp (Red & Green)
- Perfect for listed buildings and
conservation areas
 - On-roof or BIPV
- Matching colour of frame, clamps &
flashings (BIPV)
- **9 colours** available for **coloured cells** & **4
colours** available for **coloured glass**

COLOURED
CELLS

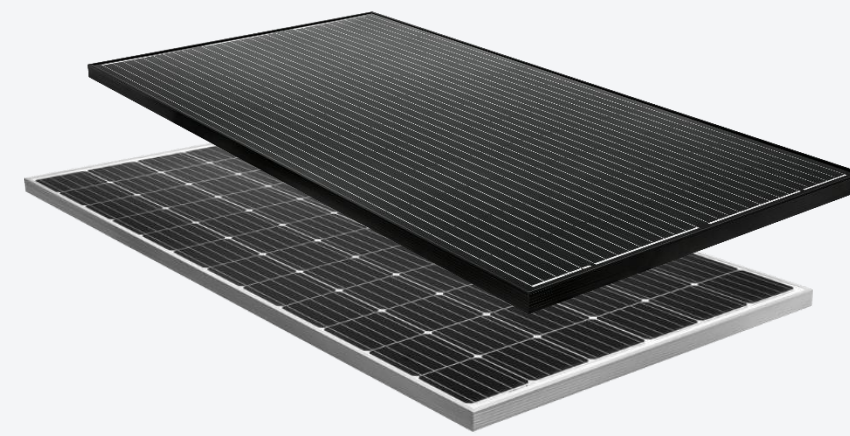
COLOURED
GLASS



BISOL Lumina

- Power classes: 150–320 Wp
 - Transparent back sheet
- Bigger gaps between solar cells
 - Natural light transmission
- Possible as BIPV and Laminates
- Available in colour (Spectrum)
 - Various design options

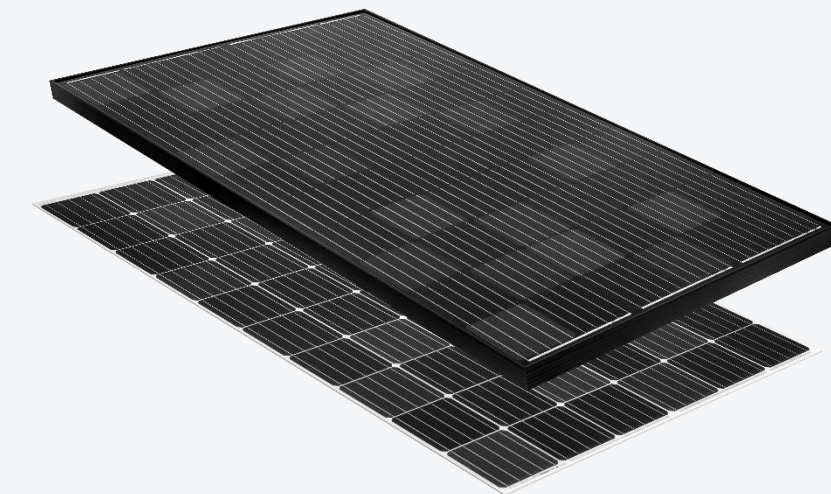
MORE



BISOL XL

- Power classes: 365–400 Wp
 - Monocrystalline
 - 72-cell matrix
- Anodized 40 mm frame
- Less mounting material & shorter installation time
- Ideal for commercial and residential systems
- Available in various designs

MORE

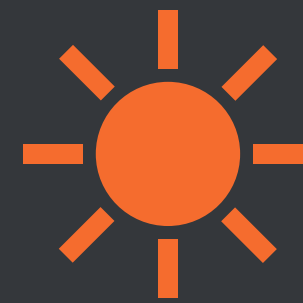


BISOL Project Series

- Power classes: 315–330 Wp (standard size), 365–400 Wp (XL)
 - Wider visual tolerances
 - Mechanical and electrical characteristics the same as in Premium Series

MORE

Choice of Components



Most rigorous internal testing

in climate chamber, until destruction

assuring that

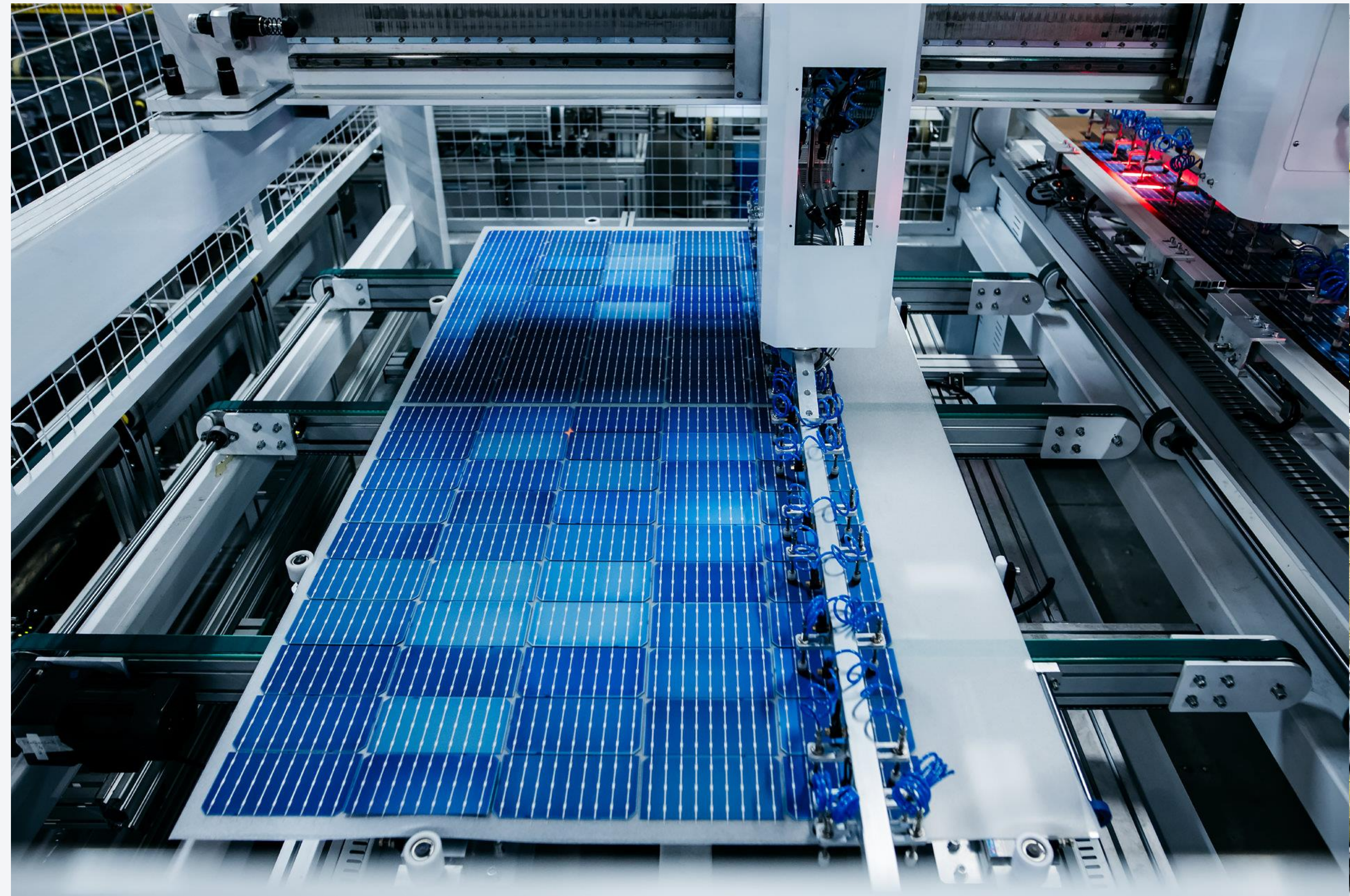
only most trusted technical solutions

of

top-notch quality materials are used.

Unique Processes

- ▶ **Longer lamination**
 - higher gel content
 - better energy yield & lower degradation
- ▶ **Cell & module sorting**
 - according to power, voltage and current
 - assuring absolutely minimized mismatch losses



Meticulously Applied Processes



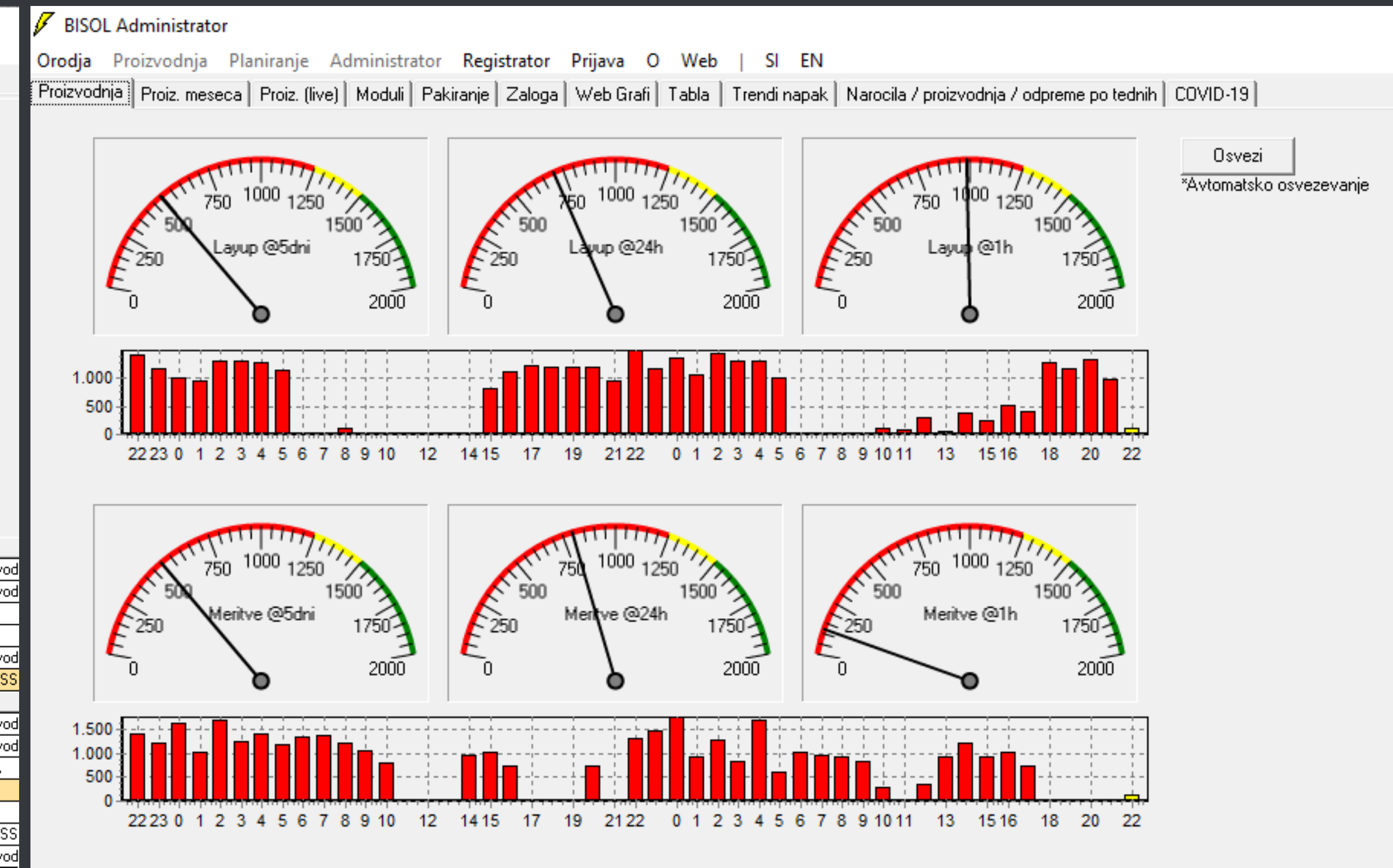
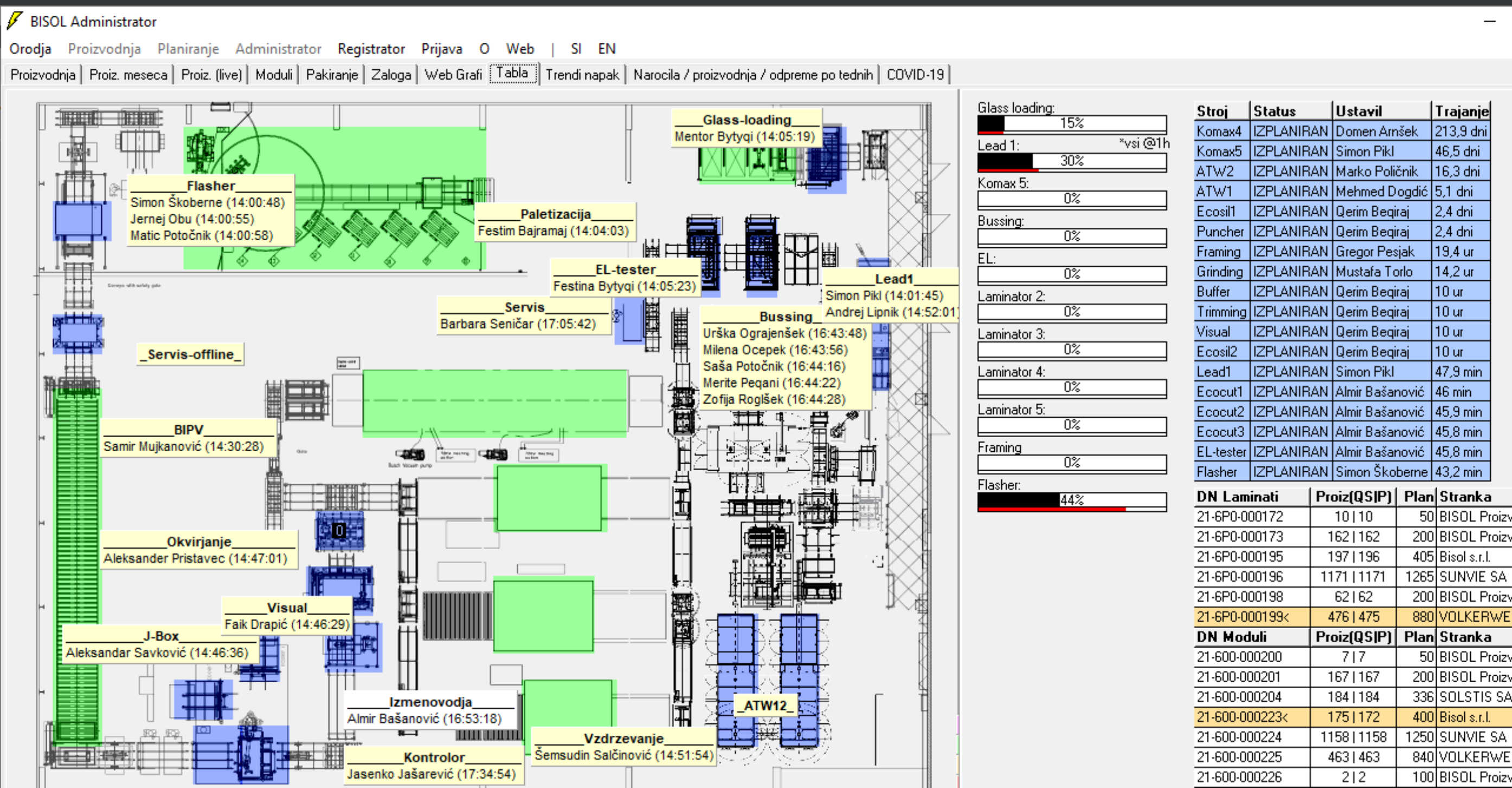
- ▶ **Zero Waste Management System**
- ▶ Dimensioning EVA foil and backsheet
- ▶ Silicone application along the whole frame



Rigorous Control & Testing

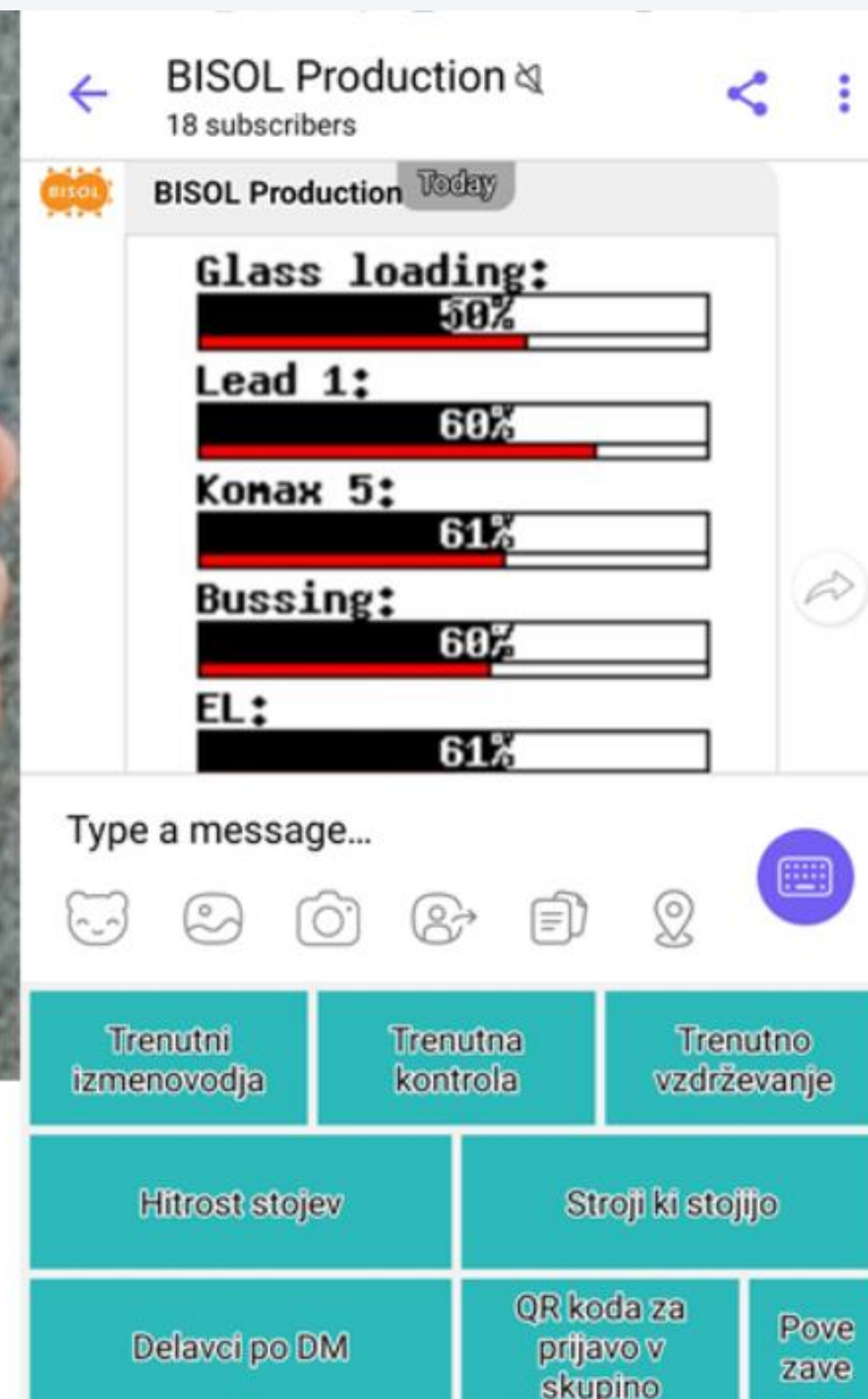
In-house designed BISOL Tracking System

- ▶ **Process control** mirroring highest auto-industry standards:
Each cent you pay goes to superior product quality not our inefficiencies.



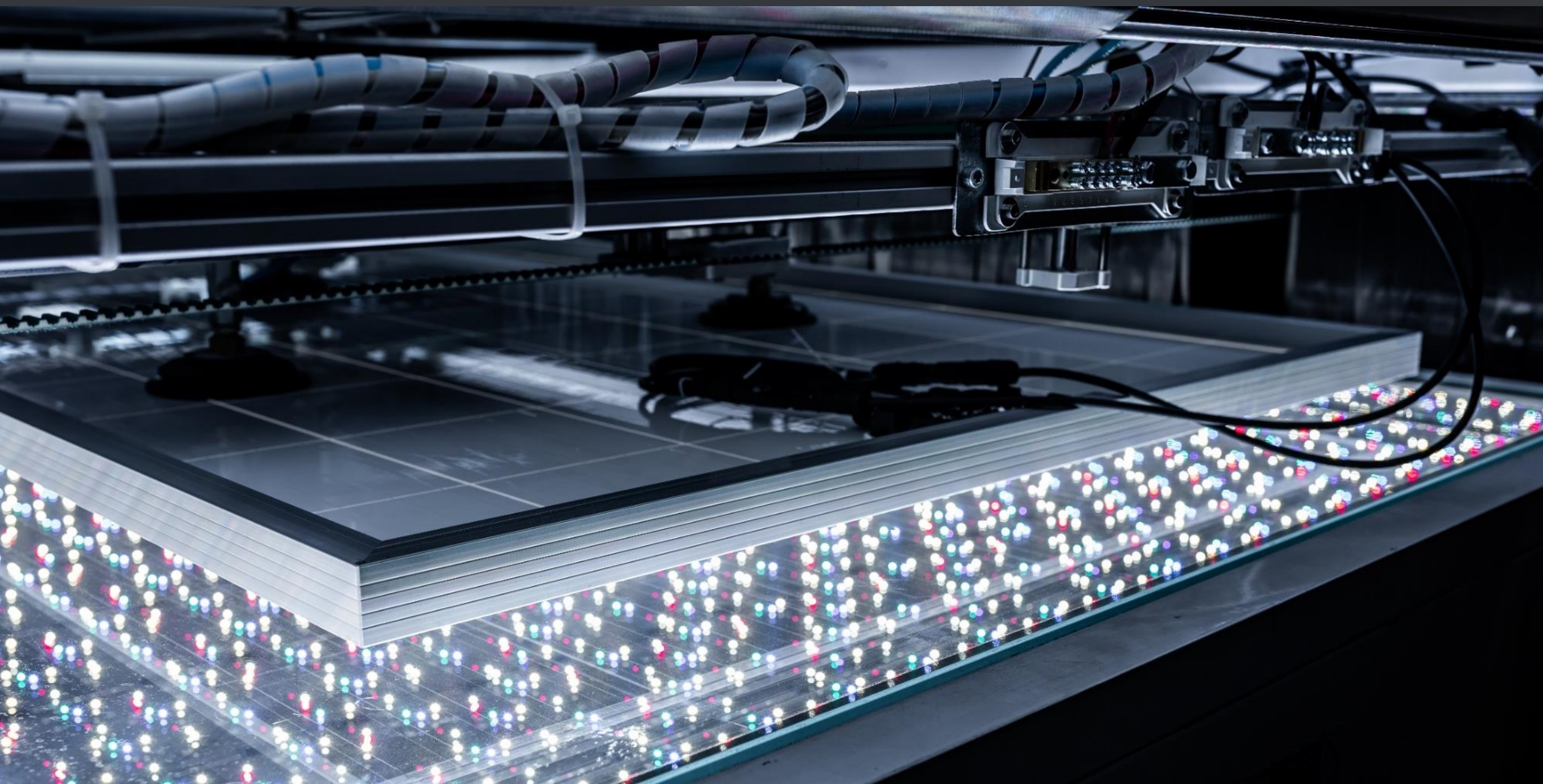
Rigorous Control & Testing

4.0 Industry → implementing 4.1 Industry (Artificial Intelligence)



Rigorous Control & Testing

- ▶ **EL testing for real** (not just show)
- ▶ **Gel content/lamination testing** (each shift, each laminator, traceability over last decade+)
- ▶ **Peel force test**
- ▶ **Climate chamber** (testing materials and products till destruction)
- ▶ **Flashing every module MEANS flashing EVERY module**



Perpetual R&D

- ▶ Materials
- ▶ Designs
- ▶ Processes
- ▶ Automation development & AI with self-learning programming code.

More than 15 years old experience & track-record that cannot be bought.

Perpetual R&D

- ▶ Sustainable industry with globally innovative sustainable product:

BISOL Supreme™

- The only in the world with 25 years 100% Output Power Guarantee.
- Every module equipped with QR Code with a complete ID Card (EL images, visual camera images, material used etc.).
- Laboratory tests show the lifespan of up to 70 years.

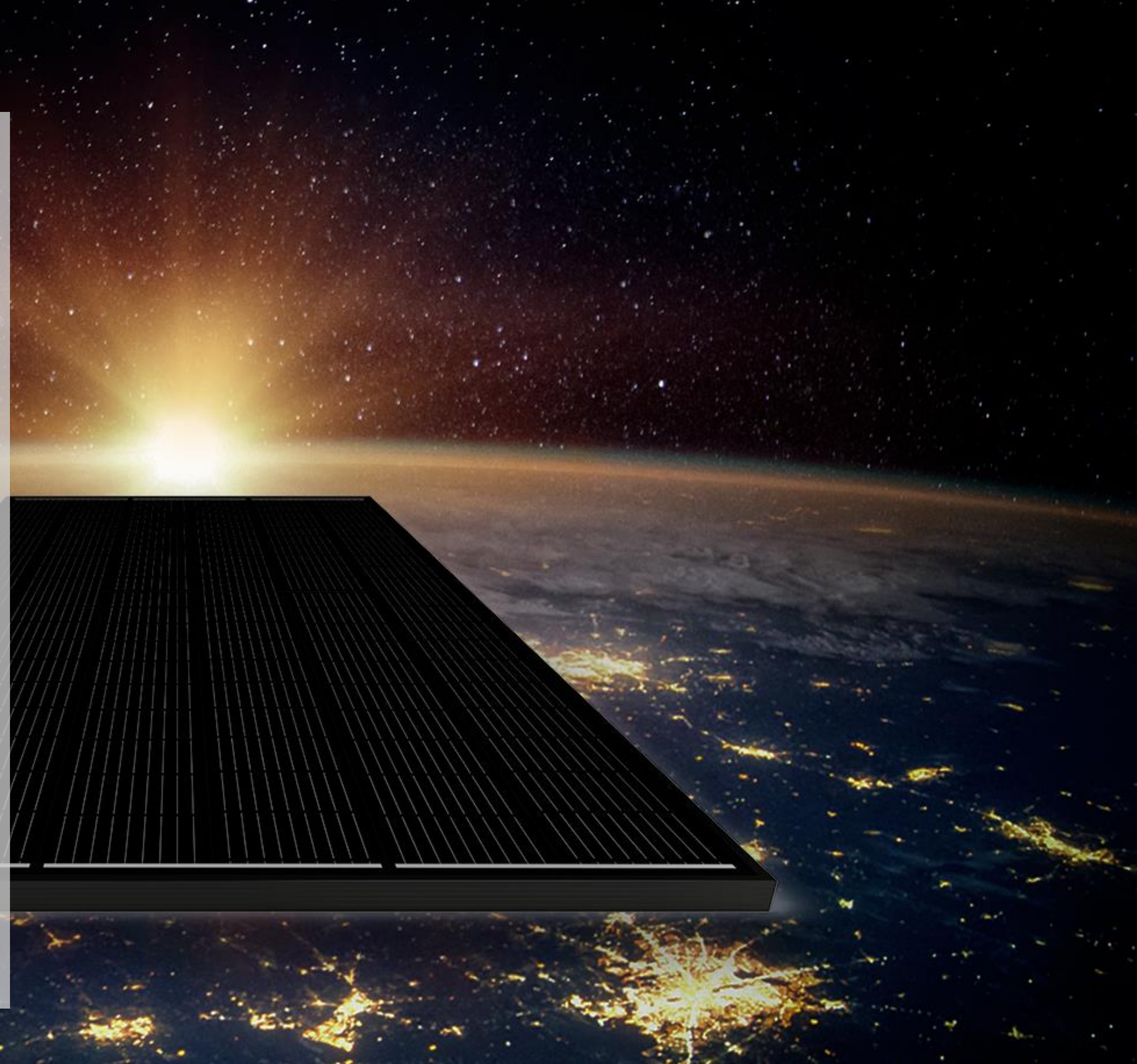


BDO - 365

1782504386



BISOL Supreme



Perpetual R&D

Resulting in:

- ▶ Superior climate chamber results
- ▶ Robust existing PV PPS results
- ▶ Lowest degradation
- ▶ **Lowest guarantee claims:** in 15+ years < 1/10.000
- ▶ Happy returning customers



NED
Nouvelles Energies Distribution

"We have chosen to work with BISOL because it is one of the few European manufacturers! The strong point of BISOL is obviously its flexibility, which mainly goes to great commercial and logistical work of the company. In general, **BISOL products are very good and are very satisfactory.**"

Clément Dupuis
NED Energie, France

Logistics and Service

Tailored to end client

- ▶ **Widest product range** (also niche / customised products)
- ▶ **Robust packaging** with installer in mind
- ▶ **Logistical proximity**
- ▶ **24/7 sales support**

Your dedicated salesperson knows you, answers your calls, goes extra mile for you – and has a name that you can actually pronounce.



References



References



THANK YOU!

Stay connected.

Let's share

SLOVENIAN expertise.



Solar company!

S⁺OLSOL⁻