



BAUER

SOLAR 

reliable like the sun



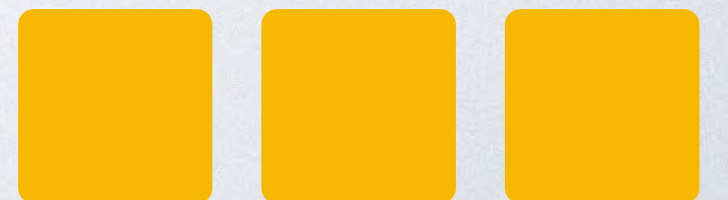


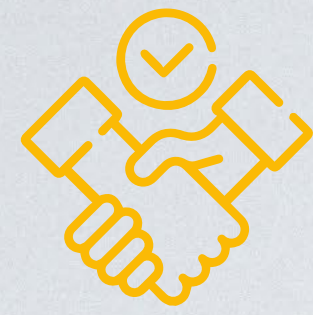
Owner-managed Company

Andreas Bauer
CEO

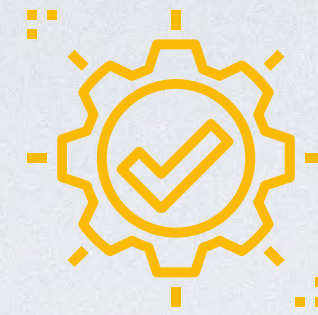


Family owned company in 2nd generation





RELIABLE



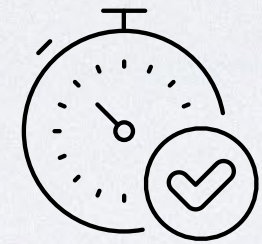
AVAILABLE



PUNCTUAL



RELIABILITY, PUNCTUALITY AND TRUST



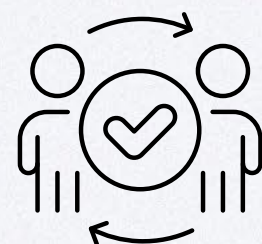
UP TO 30-YEAR PRODUCT AND PERFORMANCE GUARANTEE



GERMAN GUARANTOR

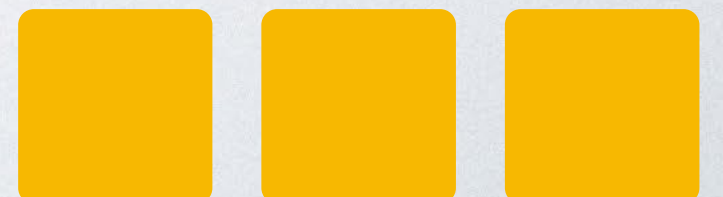


EXPERIENCED GROWTH CHAMPION



FROM ONE PERSON TO ANOTHER

what defines us





LOCATIONS

Selzen & Sörgenloch, Germany

Ronse, Belgium

Helsinki, Finland

Budapest, Hungary

Plock, Poland

Thessaloniki, Greece

Lecce, Italy





1985, 1988, 1998

BAUER Company Formation
Electrical, heat & sanitary
installation, switch cabinets



2006

**Introduction of
BAUER PV Panels**



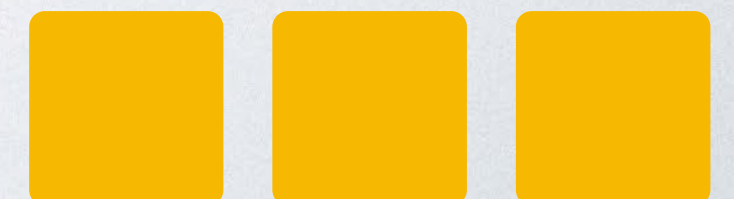
2003

PV Installation



2009, 2010, 2011

Market Entry
Spain & Italy, Benelux,
Eastern Europe





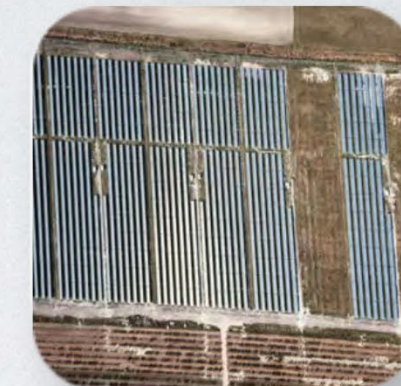
2016

Market Entry
Northern Europe



2019

30 MW Project
in Baja, Hungary



2018

Product Launch of
BAUER Glass-Glass Panels




History






2022

Market Entry
Kanada




2021, 2022

Financial Times & Statista
Europe's Fastest Growing
Companies



2023

New BAUER Headquarter
& Logistics-Center



History





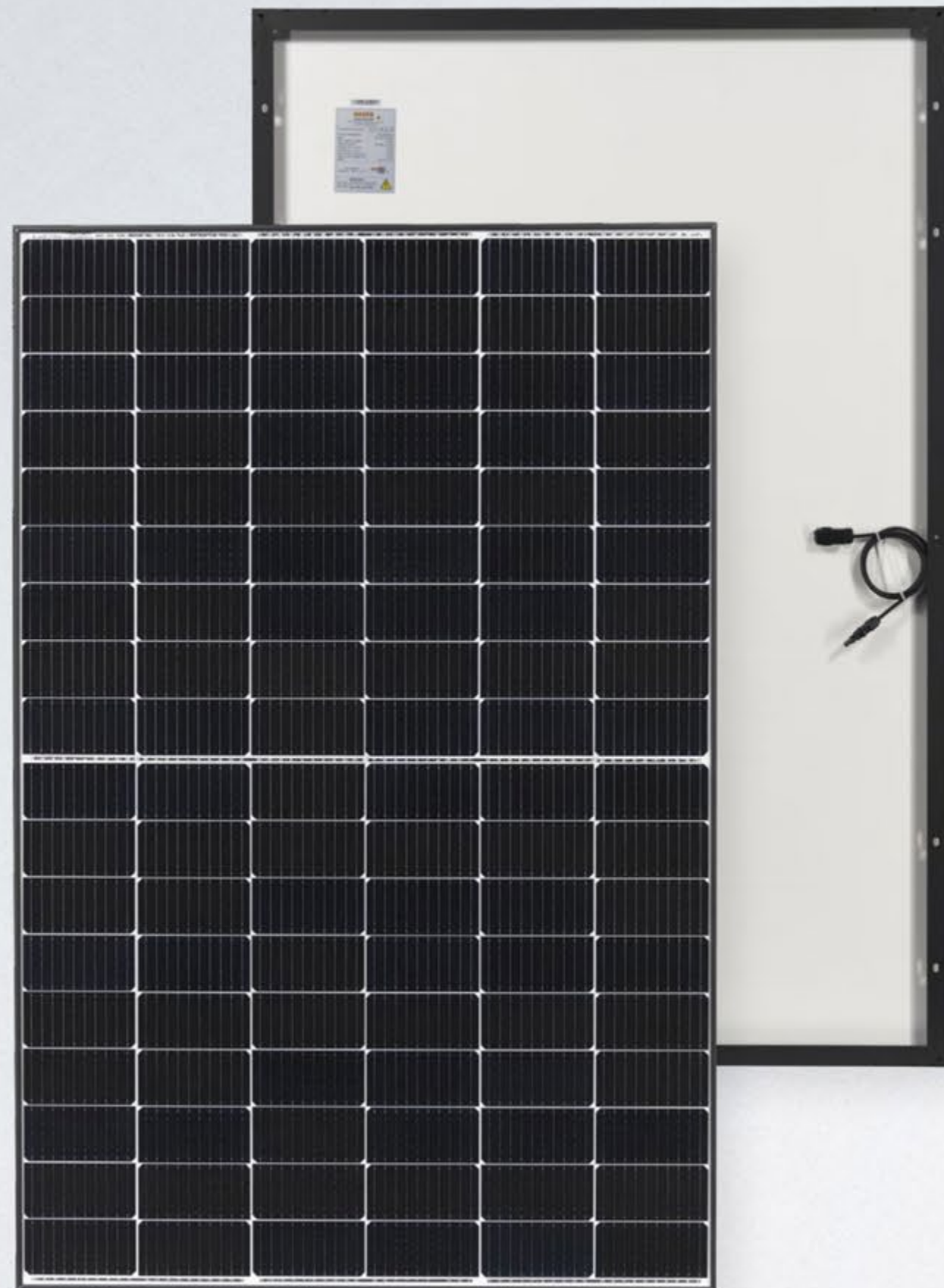
FT 1000 Europe's Fastest Growing Companies

2021 & 2022

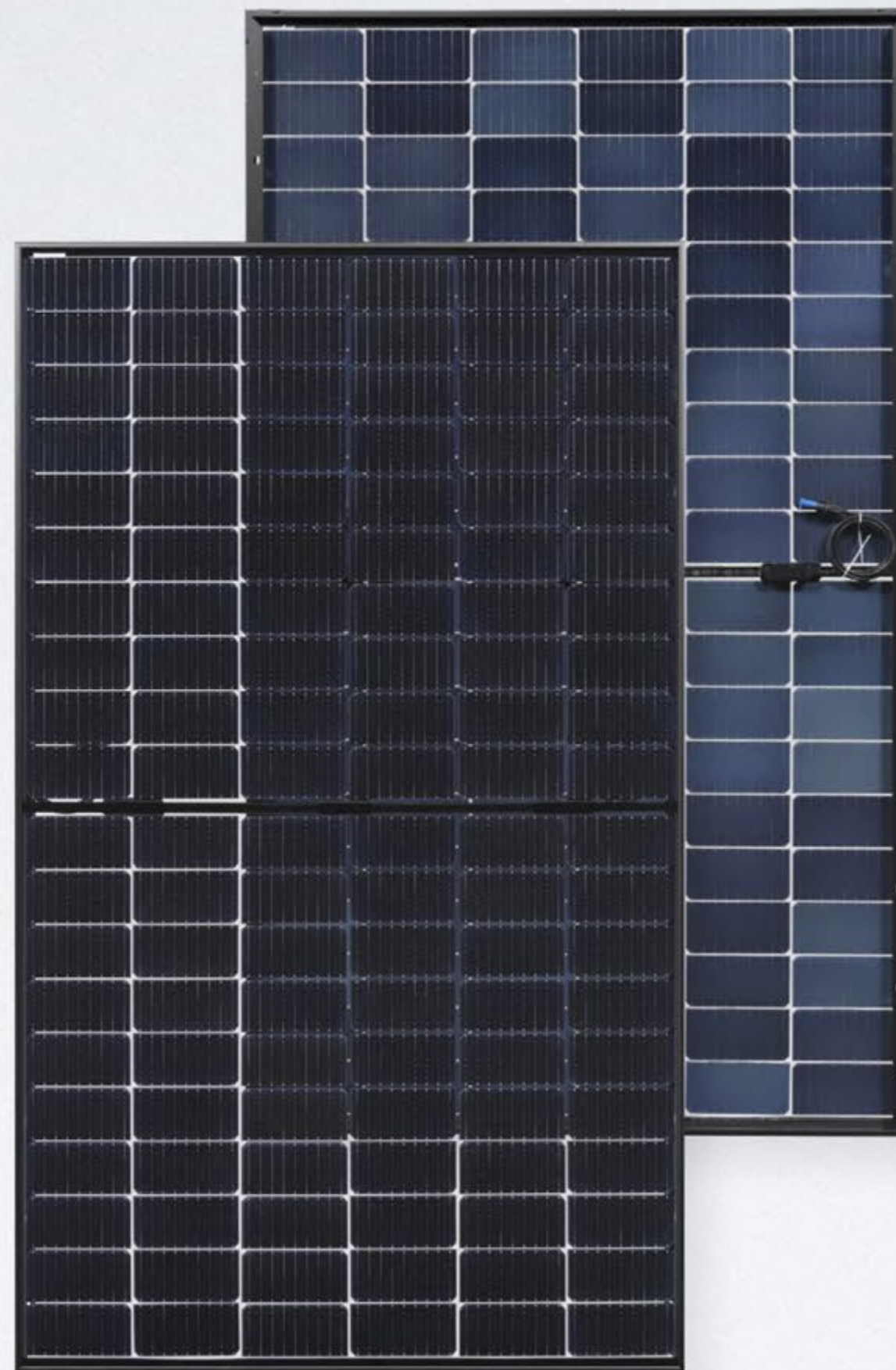




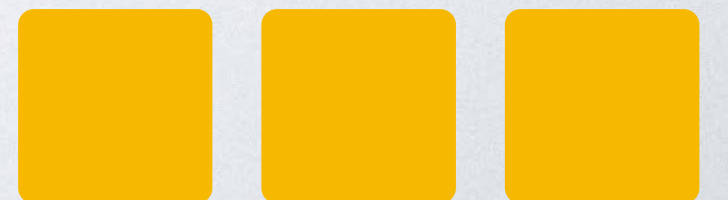
PERFORMANCE



PREMIUM PROTECT



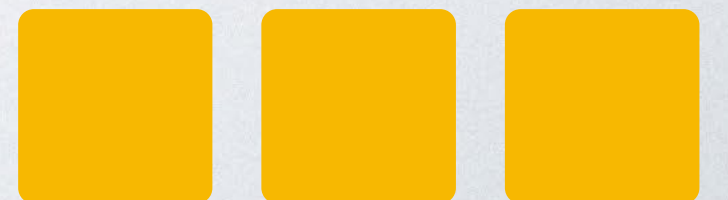
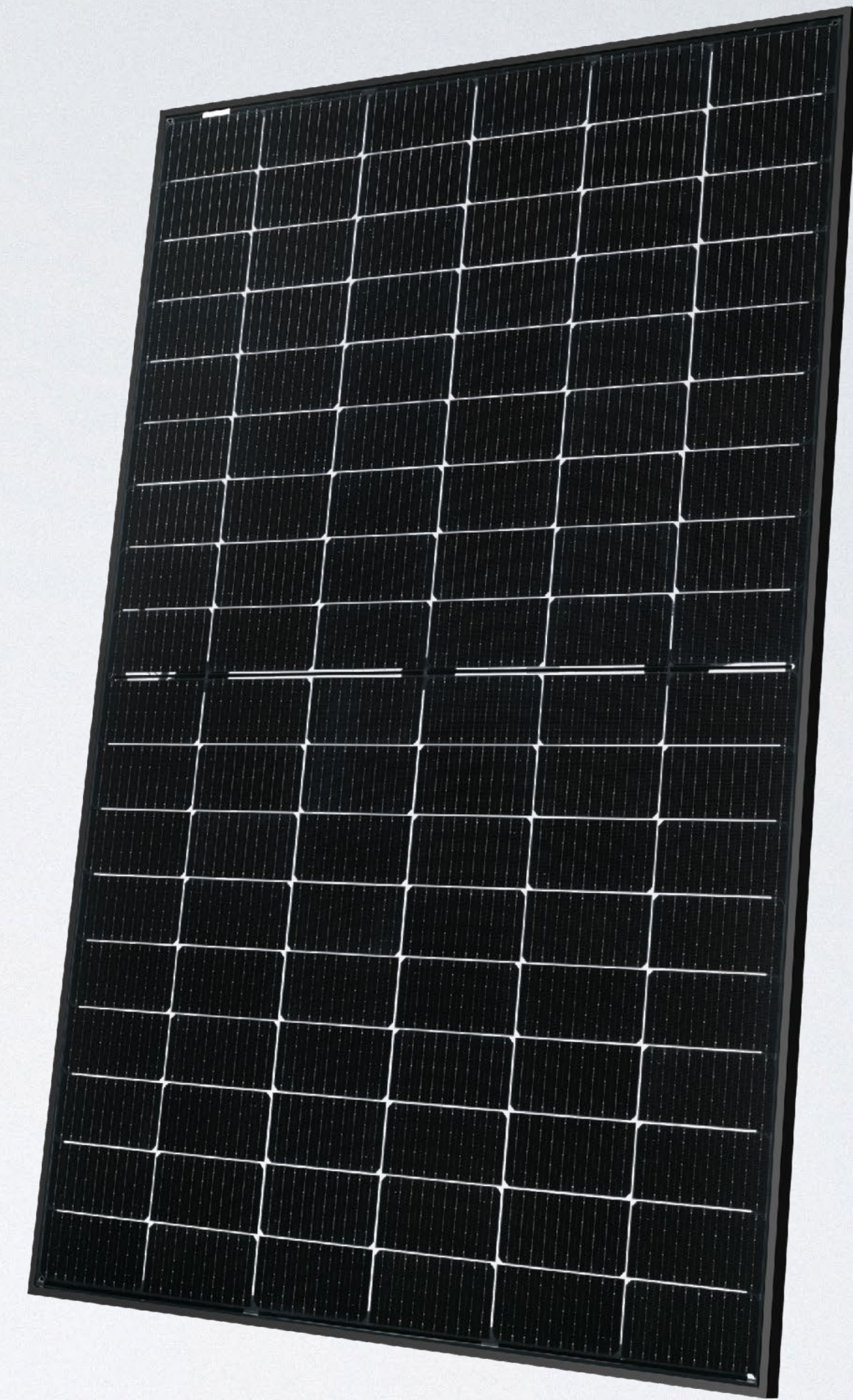
SUPERBLACK





PREMIUM PROTECT

glass-glass module





BS-108M10HBB-GG

Bifacial glass-glass half-cell module 420 - 430 W

N-Type TOPCon technology

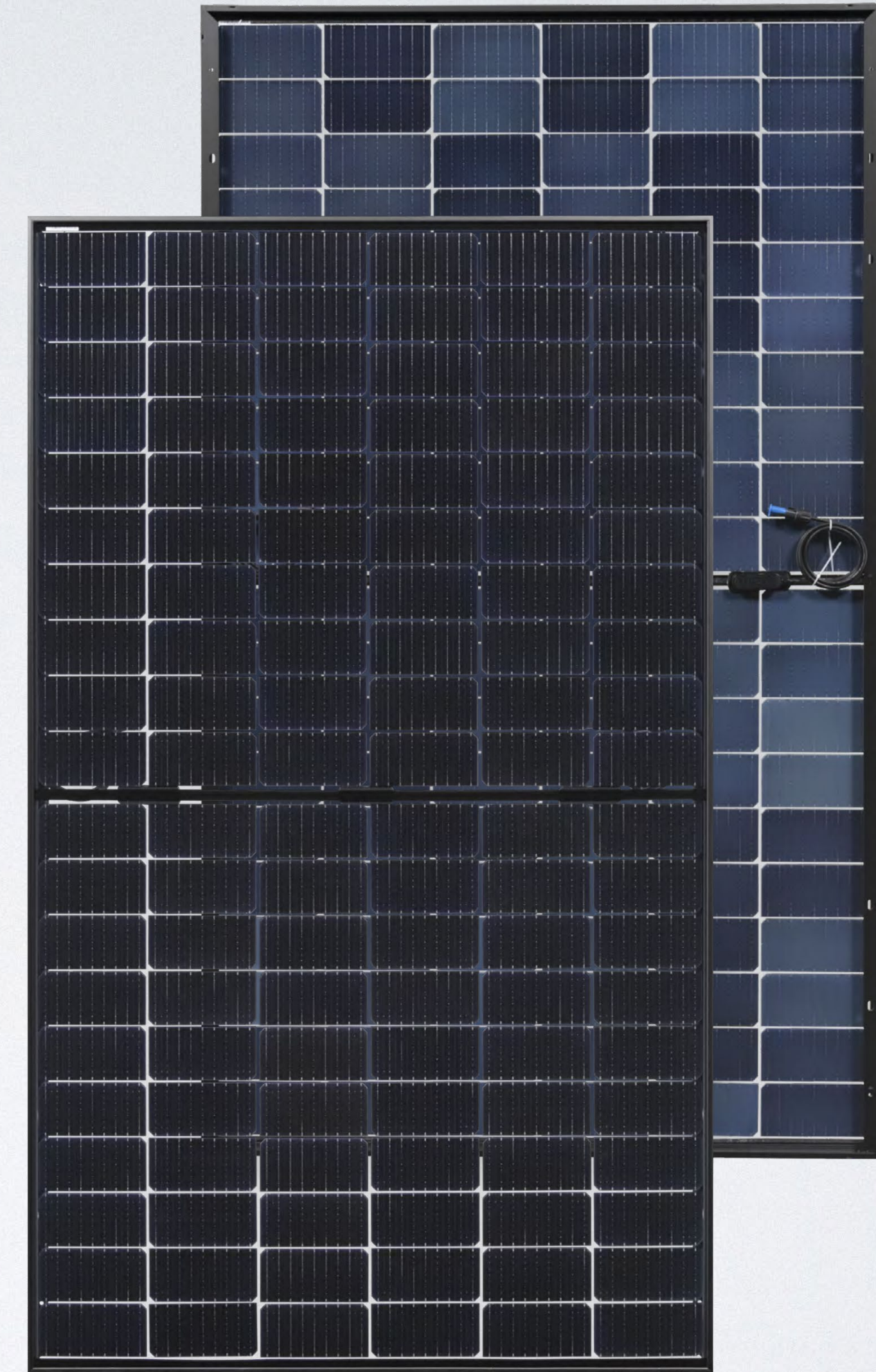
Size 1722 x 1134 x 30 mm

Weight: 24,7 kg

Product warranty: 30 years

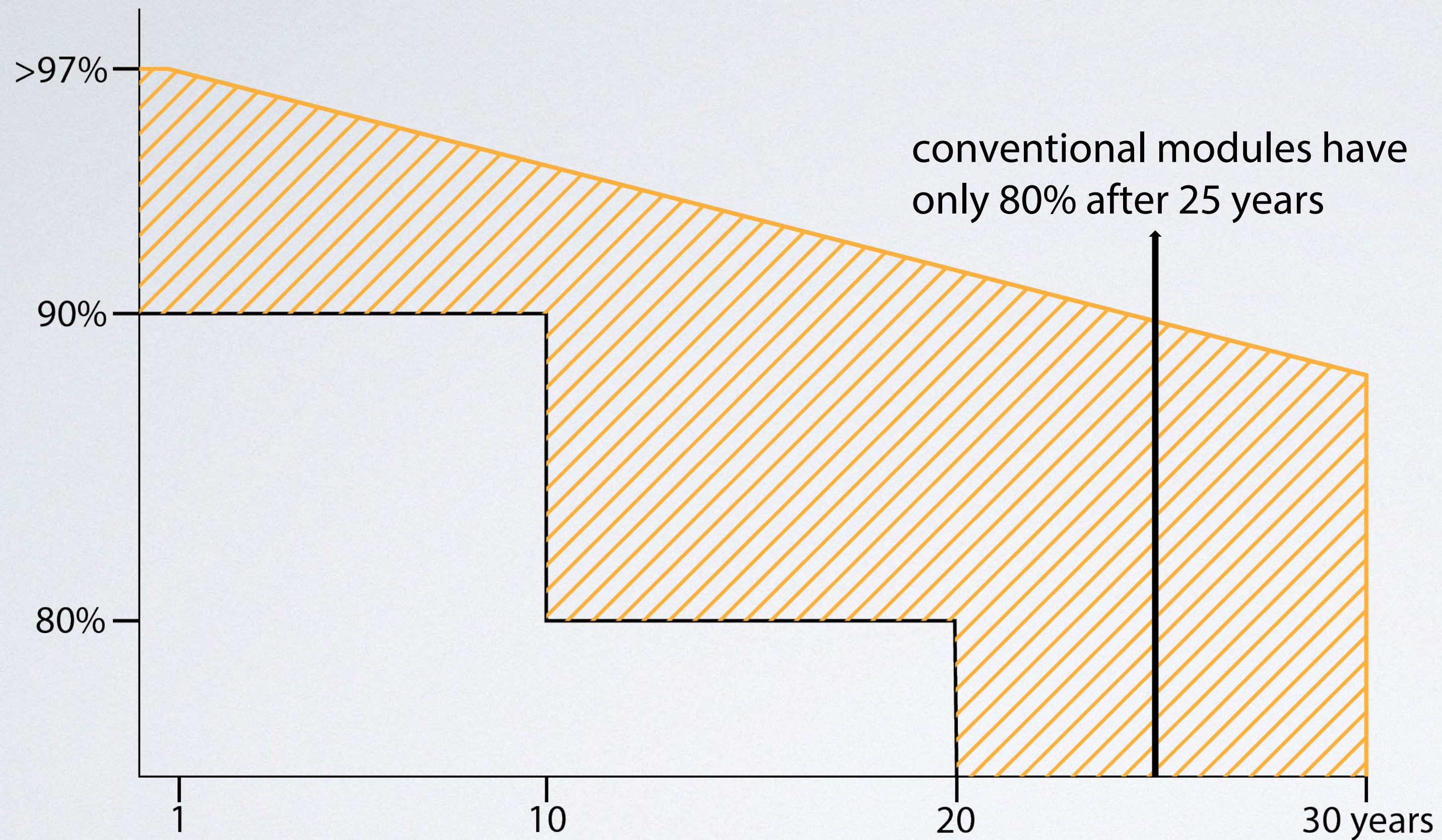
Performance guarantee: 30 years

Design & handling – suitable for any project



Glass-Glass modules





$\leq 87,4\%$

linear performance warranty
after **30 years**

Product guarantee of **30 years**





PERFORMANCE GUARANTEE

30 year product warranty and a linear performance guarantee over a period of 30 years



CERTIFICATION

IEC 61215, IEC 61730, fire class A acc. IEC 61730-2
Tested by accredited inspection bodies



N-TYPE BIFACIAL HALF-CELLS

Up to 30% increase in yield through bifacial cells, active on both sides and a transparent backside



GERMAN GUARANTOR

If necessary, it is guaranteed that a German company takes over any claim settlements



PID TEST

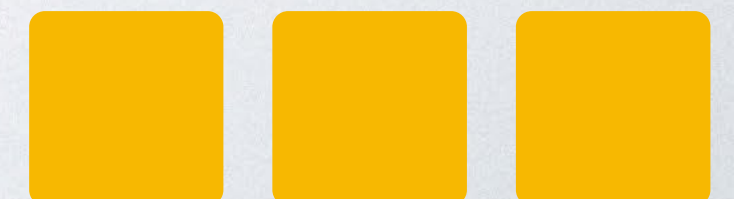
The solar cells of BAUER premium modules are tested for PID



REINSURANCE COVERAGE

The cooperation with MunichRE guarantees even higher levels of financial stability

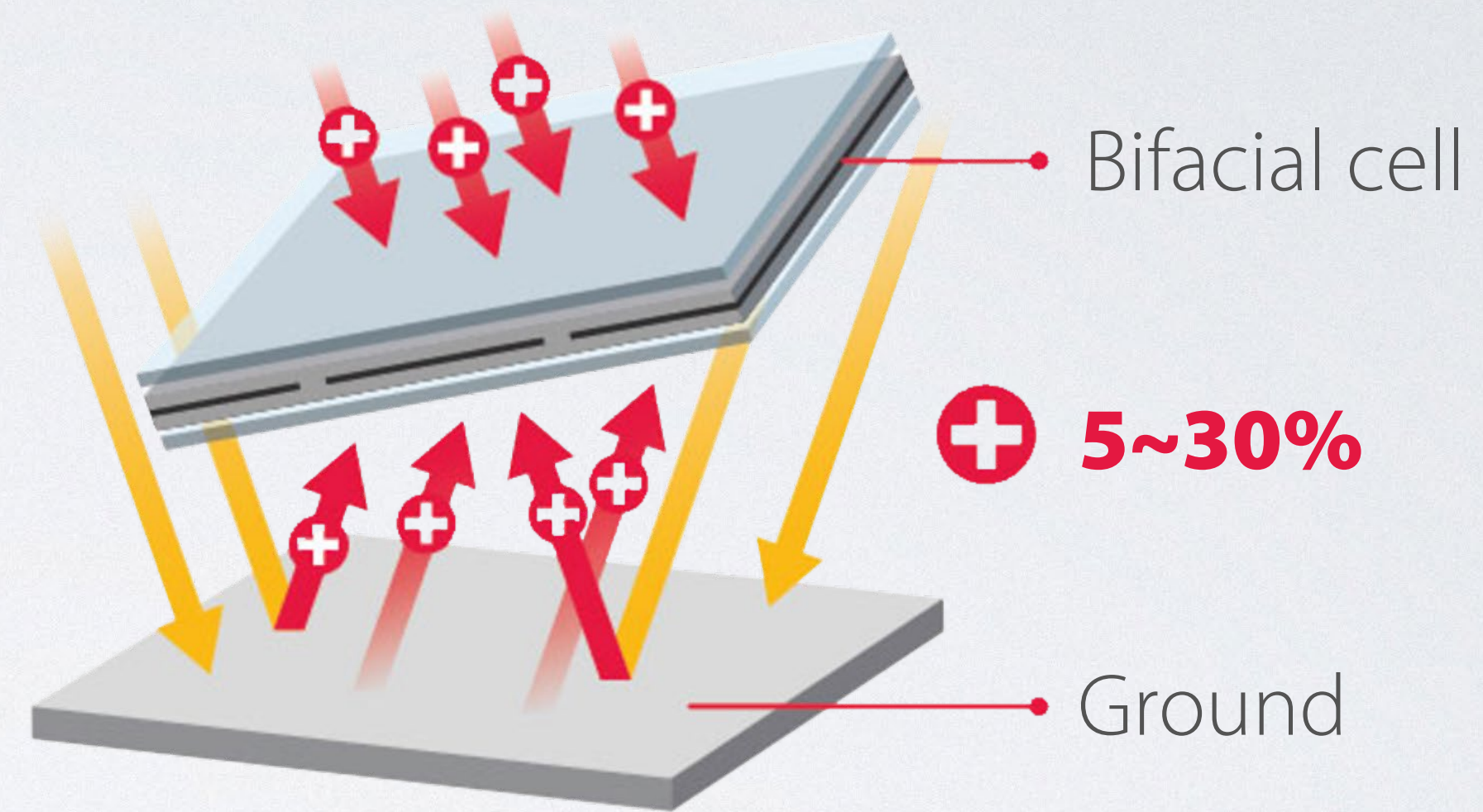
Advantages of **BAUER** glass-glass modules





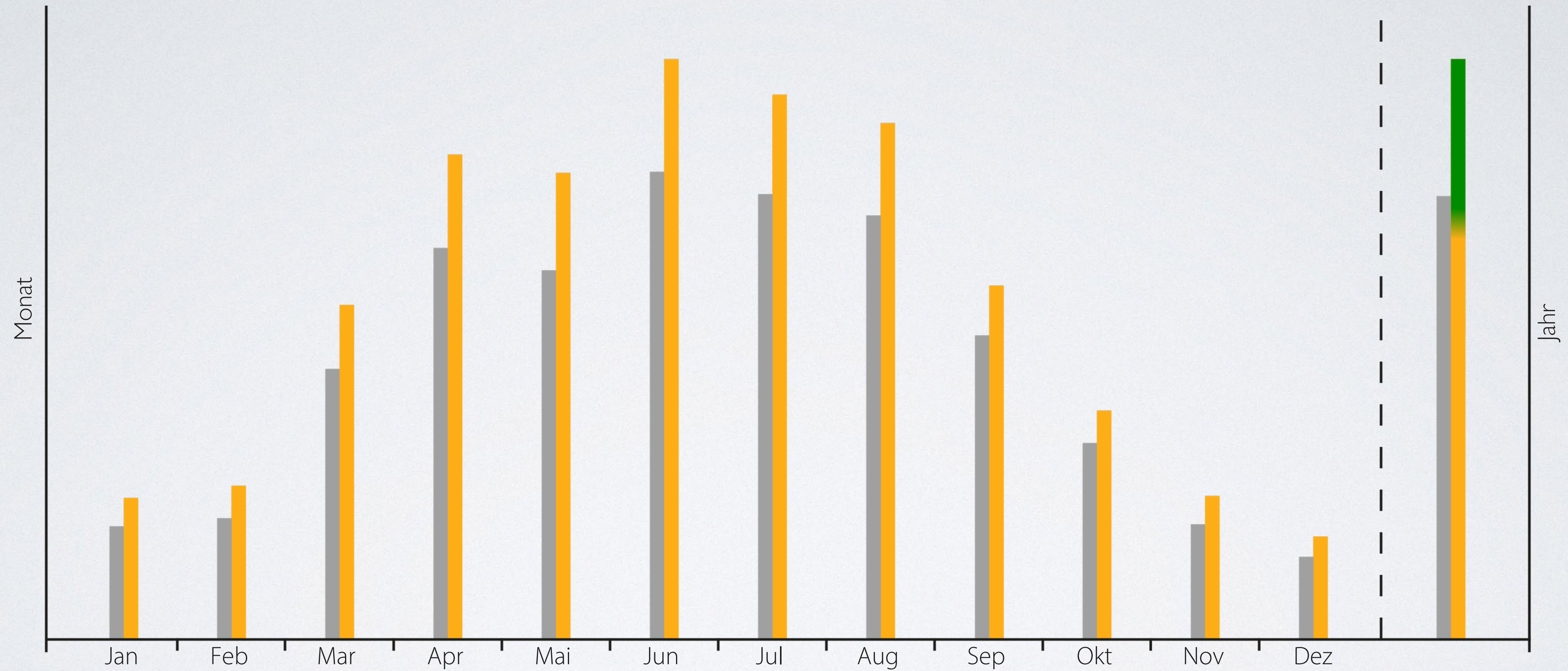
BIFACIAL SOLAR CELLS

Yield surplus of 5 to 30%



Glass-Glass modules



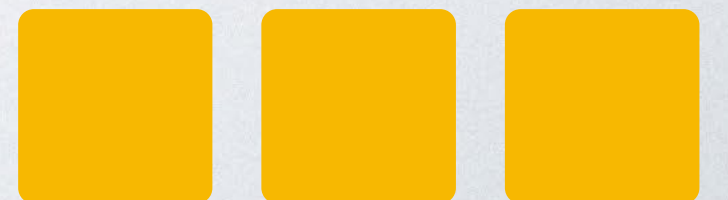
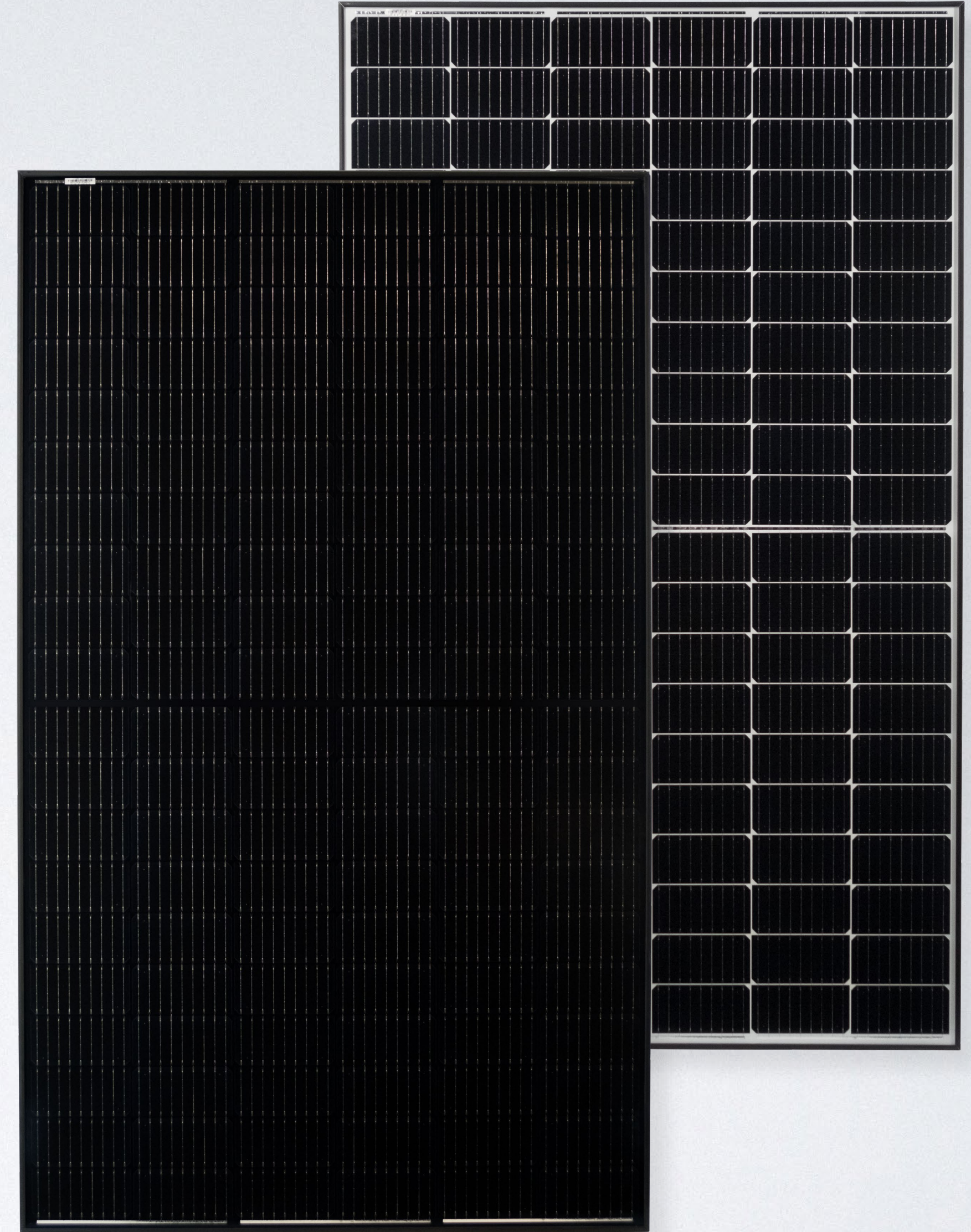


Specific yield [kWh/kWp]





SUPERBLACK & PERFORMANCE glass-foil modules



BS-M10HB

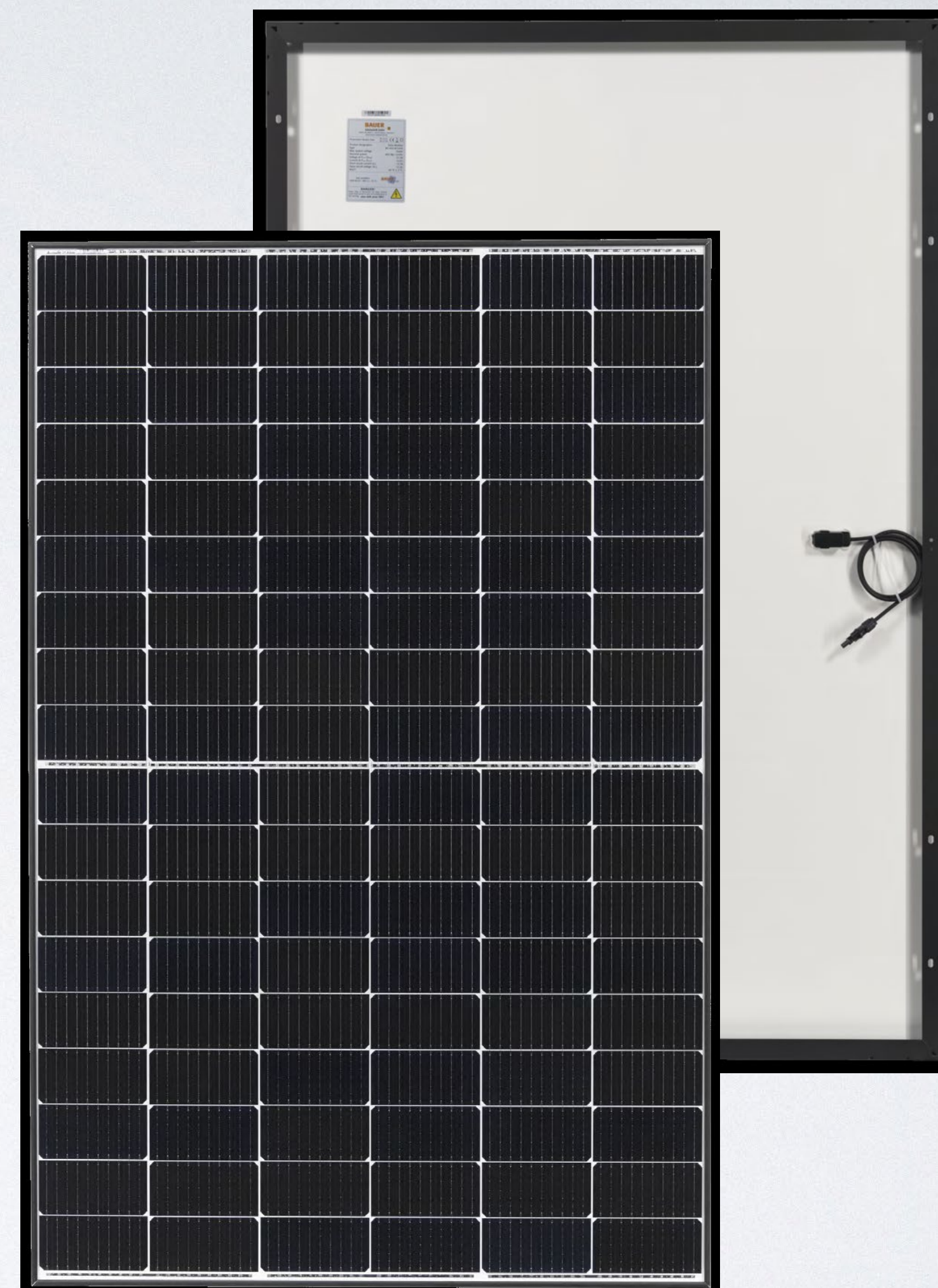
Monocrystalline half-cell module 400 - 410 W

Size 1722 x 1134 x 30 mm

Weight: 21,4 kg

Product warranty: 20 years

Performance guarantee: 25 years



HC - PERFORMANCE

BS-M10HBB

Monocrystalline half-cell module 395 - 405 W

Size 1722 x 1134 x 30 mm

Weight: 21,4 kg

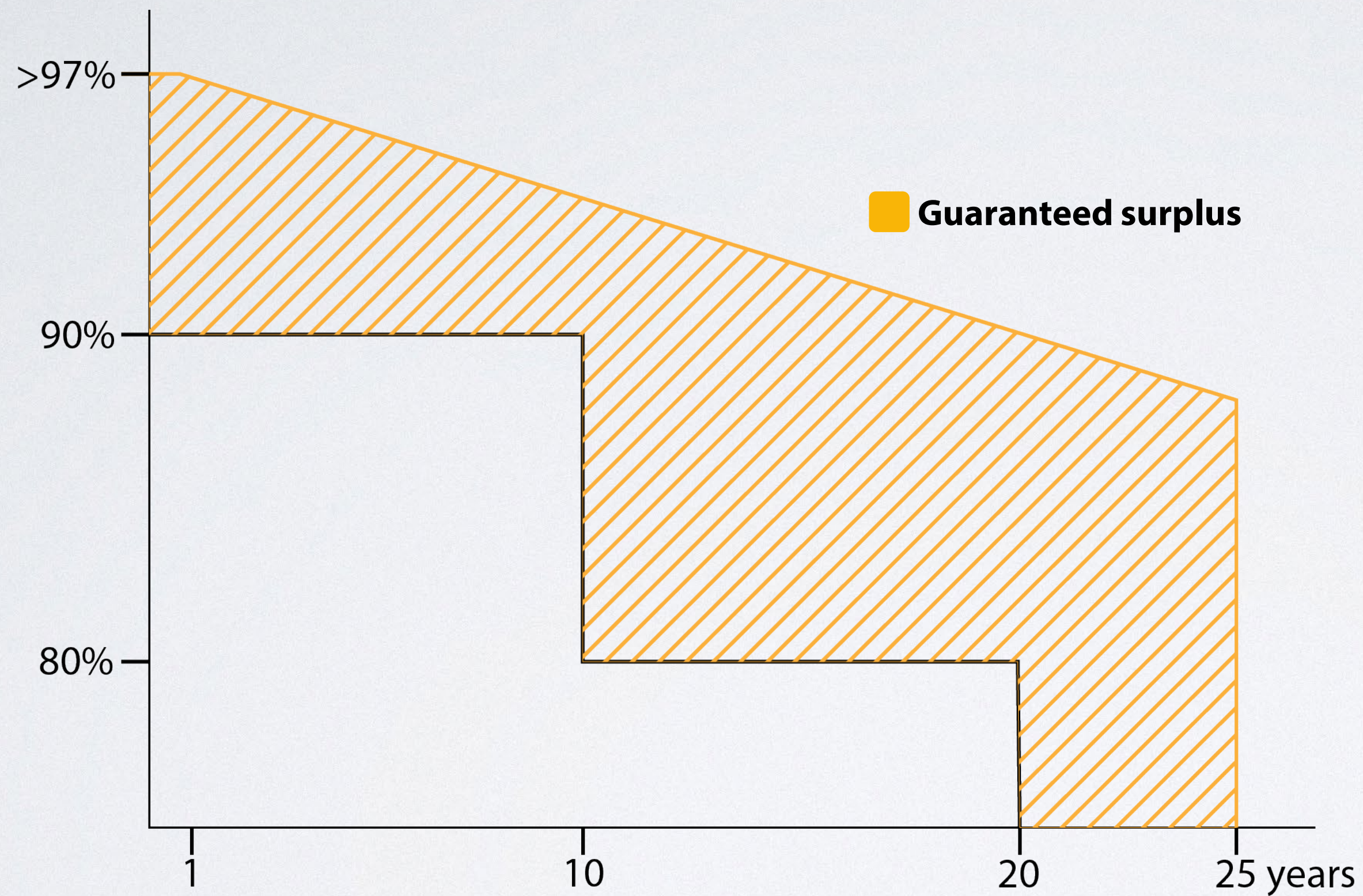
Product warranty: 20 years

Performance guarantee: 25 years

Elegant design & handling
suitable for any project



HC - SUPERBLACK



$\leq 87,2\%$

linear performance
after **25 years**

Product warranty of **20 years**





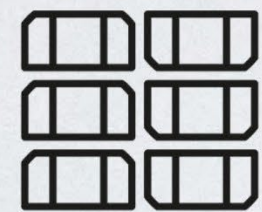
PERFORMANCE GUARANTEE

20 year product warranty and a linear performance guarantee over a period of 25 years



CERTIFICATION

IEC 61215, IEC 61730
Tested by accredited inspection bodies



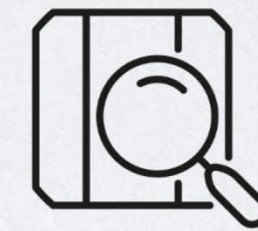
HALF-CELL TECHNOLOGY

Double the amount of cells on the same surface area reduces power loss in case of e.g. shadowing



GERMAN GUARANTOR

If necessary, it is guaranteed that a German company takes over any claim settlements



PID TEST

The solar cells of BAUER high performance modules are tested for PID



REINSURANCE COVERAGE






The cooperation with MunichRE is guaranteeing even higher levels of financial stability

Advantages of **BAUER** glass-foil modules





Social Media Channels

-  Facebook
-  Instagram
-  LinkedIn
-  Youtube
-  Homepage

