

SOLID Solrif®

Glass / Glass



In-Roof



Self-cleaning effect



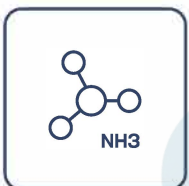
Salt mist resistance



Fire class A



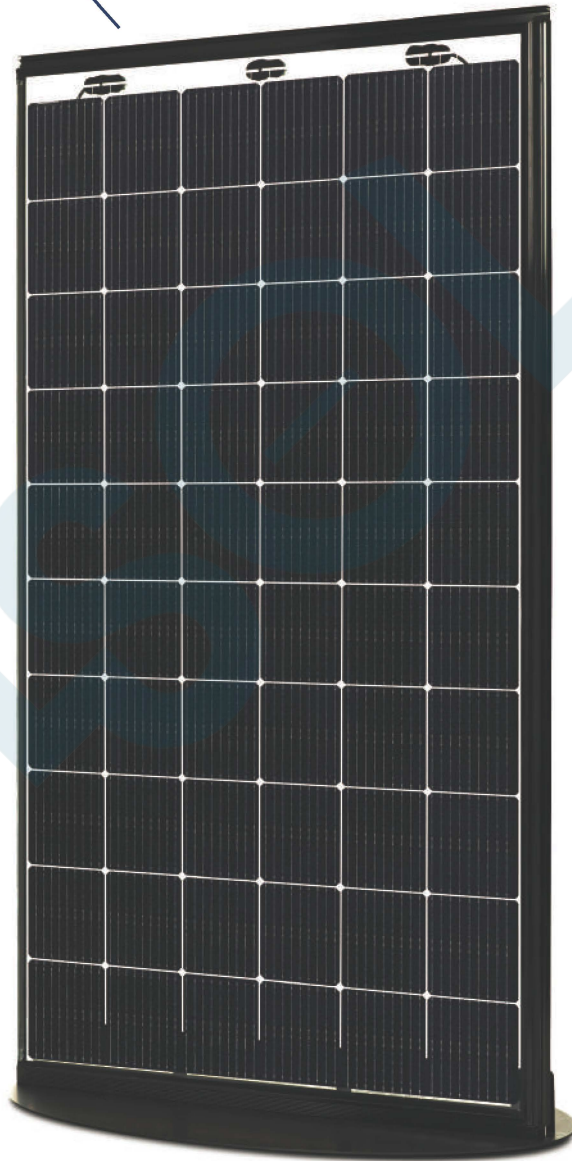
Dust & Sand resistance



Ammonia resistance



Extreme load resistance



Positive sorting up to +5W

SOLSOL

SOLSOL s.r.o.
Králova 298/4
Brno, 616 00
Czech Republic
E-mail: sales@solsol.cz
www.solsol.cz

Bifacial ⚡ 355 W

30

Product warranty

87%

Power guarantee

30

Efficiency guarantee

Glass / Glass

Electrical data (STC*)	
Maximum Power	355
Cell Technology	Bifacial
Open circuit voltage (V_{oc}/V)	39,95
Short circuit Current (I_{sc}/A)	11,09
Max Power Voltage (V_{mpp}/V)	34,03
Max Power Current (I_{mpp}/A)	10,45
Module Efficiency (η)	18,04%
Max System Voltage (V)	1500
Max Current (A)	20
Power Tolerance	0/+5W

*Under Standart Test Conditions (STC) of irradiance of 1000W/sq. m., spectrum AM 1.5 and cell temperature of 25 C

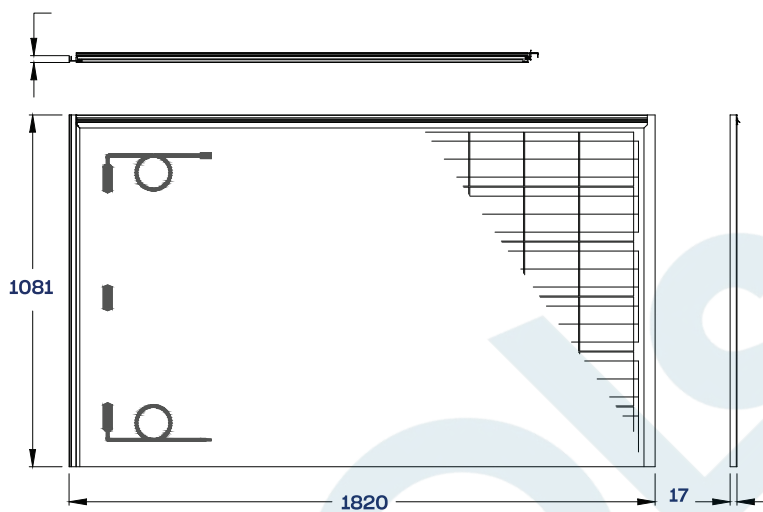
Flash testing measurement accuracy of +/- 5% All transparency values are approximate +/- 3%

Temperature ratings	
Current temperature coefficient (α)	+0,04% /°C
Voltage temperature coefficient (β)	-0,35% /°C
Power temperature coefficient (δ)	-0,47% /°C
Nominal Operating Module Temperature	46°C

Mechanical data	
Dimensions (LxWxH) (mm)	1820x1081x17
Weight (kg)	35
Dimensions (LxWxH) (mm) when in system	1802x1049x17
Front / Back glass (mm)	3 mm
Cell Type	Bifacial
Cell Size (mm)	166x166
Transparency %	10
Cell configuration	6x10
Busbars	9
Frame	Solrif®
Operating Temperature (°C)	-40 ÷ +85
Max Load (wind/snow) (Pa)	1600/3600**
Junction Box / IP Class	Split junction box / IP68
Cable Cross Section Size (mm²)	4
Cable length	1,2 m
Bypass Diodes	3
Connector	MC4 compatible

Dimensions & Mounting

1600/3600 Pa**



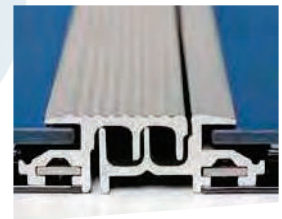
**Safety factor 1,5

Optimal Weather Lightness

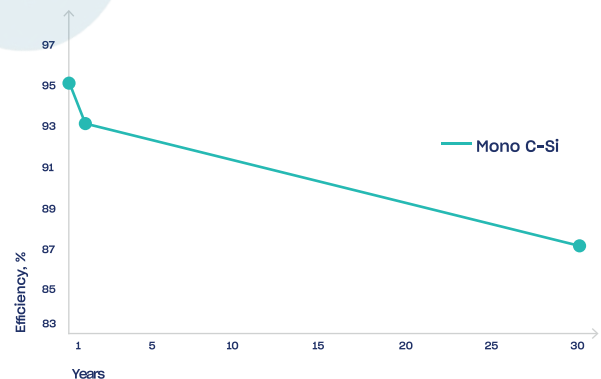
Frames are shingled from top to bottom and are interlocking left to right much like tiles for optimal weather protection.

Easy Installation

The modules are held by metal clamps that are mounted to the roof battens. This allows for quick and easy installation.



Power output warranty



Tips for Better Power Output

- Better module ventilation and shorter connection cables increase electrical energy production.
- Always observe object/mutual shading in site. Shading can drastically cut electrical energy generation output.

Attention

- Always check if your system is compatible with local environmental conditions (wind/snow load, temperatures) on your site to ensure safety and long-term energy production.
- Do not connect differently orientated PV panels in the same string / MPPT of the inverter (unless optimizers are used).
- Do not connect strings with an unequal amount of PV panels in one MPPT (unless optimizers are used).
- Use PV panels of same electrical parameters in one string/MPPT (unless optimizers are used).
- Always ensure that your inverter is equipped with DC disconnector. If not it is recommended to install it externally.
- Never let different metals come in contact with each other. Use bi-metallic plates or plastic separators to eliminate galvanic corrosion.
- It is highly recommended to install SPD's in both AC and DC circuits because overvoltages void the warranty for inverters and also panels if they are harmed.
- It is highly recommended to ground PV panels mounting system and to install lightning protection in site.



Certificates and memberships

